



PRESIDENT'S MESSAGE

I hope your 2019 is off to a great start. For those who don't know me, I'm Gary Cole of Monroe County, a retired forester with the Alabama Forestry Commission. During my career, the Alabama TREASURE Forest program was instrumental in recognizing landowners for hard work and sound natural resource management. The Alabama TREASURE Forest Association (ATFA) recognizes these efforts and supports Alabama landowners. I want to thank Lamar Dewberry for his past leadership and am excited to serve as this organization's president for the next two years.

Last year was an excellent example of what we can accomplish when we work together to benefit Alabama's natural resources. All our programs had an exceptional year — from Classroom in the Forest to our new liability insurance program and from regional meetings to the newly combined Alabama Landowners Conference. I am proud of our involvement in the counties. Thanks to each of you who helped host or plan a Classroom in the Forest or regional meeting.

The inaugural Alabama Landowners Conference, held in Prattville, was a huge success with almost 200 attendees. This conference is the culmination of efforts from several partner organizations, particularly Tree Farm and the Alabama Natural Resources Council. On behalf of the ATFA, thanks to all our partners for making this possible. We are excited to move forward with the next Alabama Landowners Conference, ensuring the quality education you've come to expect remains while we recognize some of Alabama's premiere landowners and managers. Please be on the lookout for the official announcement of this year's conference.

Using last year's success (over 500 landowners at 12 meetings) as a catalyst, we are hard at work planning regional meetings for 2019. By the time you're reading this newsletter, our meetings will already be announced. This year's meetings will focus on pesticide application for forest landowners. Please regularly check our website, TREASUREForest.org, for details. On a related note, I encourage each of you to take advantage of the many things our association has to offer. Event liability insurance, Classroom in the Forest reimbursements, landowner tour sponsorships and an updated current events calendar can all be found on our website.

I'm looking forward to seeing where we can go as an association. If you ever have any questions, feel free to reach out to me, your local state director or William Green in the state office.

Gary Cole
ATFA President

Pike County Annual Meeting



Pike County TREASURE Forest Association held its annual meeting in Troy Feb. 28. A crowd of about 60 people heard from industry professionals and state leaders.

From left are State Rep. Wes Allen, R-Troy; Alabama TREASURE Forest Association Executive Director William Green; Alabama Farmers Federation District 10 Director Steve Stroud of Pike County; and Alabama Forestry Commission Work Unit Manager Jeremy Lowery.

Upcoming Events

- April 9** Clarke Co. | **Recreational Pond Management**
Contact Kevan Tucker at (251) 275-3121
- April 12-13** Butler Co. | **Women in the Woods Workshop**
Contact Paul Hudgins at (334) 617-3362
- April 19** Elmore Co. | **Landowner Tour at Dr. Robert Parker's TREASURE Forest**
Contact Katrina Mitchell at (334) 566-6301
- April 25** Washington Co. | **Recreational Pond Management**
Contact Sabra Johnson at (251) 847-2295
- October 9-11** Prattville, AL | **Alabama Landowners Conference**
Contact William Green at (334) 612-5235

Check TREASUREforest.org for more events. To submit an event, contact William Green at wmgreen@alfafarmers.org.

Calling All Landowners!

The Alabama Forestry Commission (AFC) has discontinued landlines in county offices to make it easier to reach employees on the go. To reach your local AFC expert on their cellphone, visit forestry.alabama.gov or check the January issue of *Neighbors* magazine.



Wildlife Trends

with Andy Whitaker

quality to this column for Alabama TREASURE Forest Association (ATFA) members. Our authors come from diverse backgrounds, including land managers, university professors, wildlife biologists, foresters, fisheries biologists and architects.

It's so gratifying to get feedback from our subscribers around the country. One landowner called to say that, because of us, he now has turkeys on his property for the first time due to article ideas he implemented. We enjoy knowing our information has helped improve your property and fulfill your land management goals.

For this time of year, remember April and May are the desired periods to plant summer crops such as millet, sorghum, peas, corn, soybeans, etc. Because many seed-producing, grass-type crops that benefit birds are summer crops, wingshooters devote a lot of energy and effort into planting this time of year. Many nutrient-draining biological processes such as fawning, milk production and antler development are taking place in deer at this time as well. Most summer plantings for deer are highly nutritious and high in much-needed protein.

Thank you to William Green and ATFA for allowing Wildlife Trends Journal to share new wildlife management ideas and help you learn from previous mistakes from other landowners. There are so many topics we plan to bring you, including food plot management, pond management, predator control, prescribed fire and herbicide usage, tree planting tips and many more. And I look forward to answering any questions you may have. Don't hesitate to reach out at wildlifetrends.com or 1-800-441-6826.



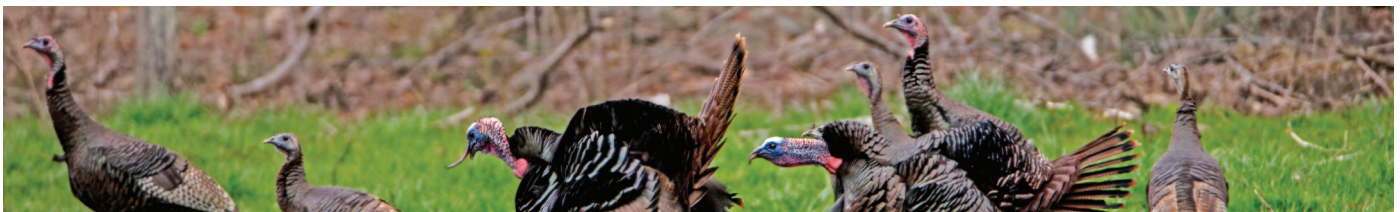
Andy Whitaker, Editor/Publisher of Wildlife Trends Journal, with his pal Earl.

As publisher and editor of Wildlife Trends Journal, I am extremely proud to offer this as the first of many future articles we will contribute to this publication to help landowners and land managers maximize the wildlife potential of their properties.

Wildlife Trends Journal is a bimonthly subscription publication providing practical wildlife management information to landowners and land managers throughout the South. We began publishing as a

black and white newsletter back in 2001 when one of my partners who owned The Wildlife Group, a tree nursery, was constantly asked questions by customers about when, where, what and how to plant trees to attract and keep wildlife on their property. This newsletter soon became one of the top wildlife management publications in the country.

Our goal is to offer quality, non-biased articles folks can count on. And I'm bringing that same



Arbor Day 2019

Alabama Gov. Kay Ivey celebrated Arbor Day Feb. 27. The tree-planting helped highlight forestry, which is Alabama's No. 1 industry and contributes more than \$21 billion to the state's economy annually. During the celebration, Ivey recognized Arbor Day poster contest winner Kaiday Barrera by presenting an award and proclamation on the state Capitol lawn.



Get Fired Up: Learn About Controlled Burns

Controlled fire, one of the most common silvicultural practices, has been used to manage Southern landscapes since the area was originally settled. Wildfires, while devastating now, were an important natural disturbance across the continent and were particularly prevalent in the Southeast. Present day managers use a controlled burn to accomplish a wide variety of goals, such as:

- Improving the aesthetic appeal of land
- Improving wildlife habitat
- Controlling less desirable vegetation
- Preventing catastrophic fire by reducing fuel

When done safely, prescribed fire is a great way to manage for highly sought game and nongame species. Whitetail deer, turkeys, bobwhite quail, red-cockaded woodpeckers and the gopher tortoise thrive in habitats undergoing healthy rotational burns. Controlled burns are a method of habitat manipulation to provide quality cover and food for native species throughout the year.

Depending on your goals, burns can be conducted year-round. Keep in mind fuel load, weather and time of year. If you think a controlled burn is right for your property, contact your local Department of Conservation and Natural Resources technical biologist at outdooralabama.com or Alabama Forest Commission forester at forestry.alabama.gov.



CLASSROOM IN THE FOREST

Supporting Conservation Education In Alabama

ALABAMA FOREST

Alabama TREASURE Forest Association

I'D RATHER BE IN THE WOODS

Available at your local tag office. For more information, visit TREASUREforest.org or pros.mvtrip.alabama.gov to reserve yours today!



Snap and Share! Send in photos of events on your TREASURE Forest to William Green at wmgreen@alfafarmers.org for a chance to be featured online and in the next ATFA newsletter.

Mann Awarded Certification



Don Mann, center, of Madison County received his TREASURE Forest Certification sign during an Alabama TREASURE Forest Association (ATFA) board meeting in Montgomery Feb. 5. Also pictured: retired Forest Stewardship Coordinator from the Alabama Forestry Commission Allen Varner, left, and ATFA board member Tim Albritton.

Pike County Groups Team Up To Give Away Trees



Members of the Pike County chapter of the Alabama TREASURE Forest Association (ATFA), with help from the Alabama Forestry Commission (AFC) and Pike County Master Gardeners Group, gave away nearly 500 trees Feb. 21 in Troy.

From left are master gardener Nell Haigh, ATFA landowner Sweetie Mae Siler, AFC Work Unit Manager Jeremy Lowery and Pike ATFA President Jeff Knotts.



You don't want to miss out on this year's Alabama Landowners Conference!

Oct. 9-11
Prattville, Alabama

ATFA Officers

Gary Cole*

President, Monroe Co.

Mark Finley*

Vice President, Winston Co.

Jamestican Parham*

Secretary-Treasurer, Wilcox Co.

BOARD OF DIRECTORS

North Region

Danny Crawford, Limestone Co.

Billy Joe Johnson*, Cherokee Co.

Don Mann, Madison Co.

Central Region

Lamar Dewberry*, Clay Co.

Wiley McCollum, Clay Co.

Jana Renfroe, Jefferson Co.

Tim Albritton, Elmore Co.

Dr. Charles (Ted) Vaughan, Sumter Co.

Drew Nix, Macon Co.

Charles Holmes, Perry Co.

South Region

Carol Dorrill*, Pike Co.

Wyatt Hendry, Washington Co.

Steve Lloyd, Monroe Co.

John Gilbert, Covington Co.

Charlie Clark, Crenshaw Co.

*Executive Committee

William Green

Executive Director

(334) 612-5235

wmgreen@alfafarmers.org

Will Brantley

Alabama Forestry Commission

Management Division Director

(334) 560-6047

william.brantley@forestry.alabama.gov



THE ALABAMA TREASURE FOREST ASSOCIATION NEWSLETTER

is published by the Alabama Farmers Federation, a member of the American Farm Bureau Federation. Correspondence may be addressed to **ATFA NEWSLETTER**, William Green, Editor, P.O. Box 11000, Montgomery, AL 36191-0001.